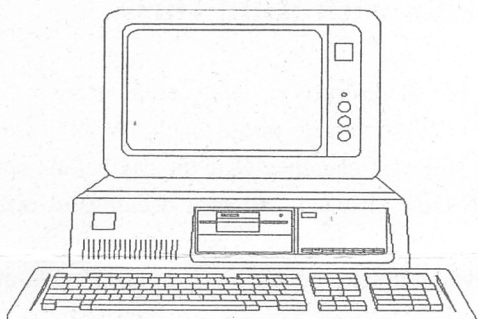


CENTERPIECE

March 1993



Database of Psychology and Social Change

One of the Center's greatest strengths is its ability to bring together people and disciplines in unusual combinations that yield significant results. In the same way that researchers, practitioners, theorists and activists came together to provide creative new directions for addressing and resolving the nuclear madness of the cold war, leaders within these same disciplines and communities are being brought together again to enhance our collective ability to address and find solutions to the ecological crisis of our times.

To do this we are developing a database of all existing literature and audio-visual materials relevant to the psychological and social dimensions of the following: the human relationship to nature and the environment; environmental activism and protest; attitudes, values, and ideologies of nature and the environment; environmental politics and policy; the understanding of and responses to environmental hazards by both groups and individuals; the relevance for environmental issues of factors such as religion, gender, race, science, and the economy.

It is our goal that this effort will both enhance the capability of those working for social change for sustainability and will be an active conduit to encourage collaborative work. By Spring 1994 these resources will be at our fingertips and accessible to our network, guaranteeing well-informed, collaborative efforts.

Balkans Peace Project

The work of the Balkans Peace Project continues this April as Eileen Babbitt, Paula Gutlove, and Lynne Jones travel to Austria to facilitate a four-day conflict resolution training session. Participants in the workshop will be professionals working with refugee communities in Slovenia, Croatia, Serbia, and Macedonia. This workshop is one effort in the Balkan Peace Project's broad, multi-year program designed to bring conflict management, peacemaking, and peacebuilding skills to community leaders, professionals, and political actors in the Balkans.

The project recently published "Towards Sustainable Peace in the Balkans," a report on a pilot effort to introduce conflict resolution theories and techniques to mixed groups of professionals in Serbia, Slovenia, and Croatia in March 1992. To receive a copy see the enclosed order form.



Corporate Leadership

Melissa Everett and John Mack have completed the research phase of the Corporate Leadership Project and have released their findings in the report, "Re-Inventing the Corporate Self: The Inner Agenda for Business Transformation." To receive a copy see the enclosed order form.

UN Update

Nancy Roof, Center representative at the UN, has been lobbying UN delegates with other NGO representatives for NGO participation in all commissions established out of the Earth Summit held in Brazil last year. The Commission for Sustainable Development was the first to be opened up to NGO involvement.

Roof also testified before the US Commission On Improving the Effectiveness Of the United Nations on October 23, 1992, urging "the inclusion of the human dimension in international conflict resolution, particularly the need to deal with deep emotions which obstruct the mobilization of political will and can prevent peaceful resolution of conflict."

P
R
O
J
E
C
T
S

FROM THE DIRECTOR



Dear Friends,

The publication of this first edition of CenterPiece is one of a number of new efforts underway to keep you, our members, better informed about, and more connected to, the many people and projects at the heart of the Center's work.

In addition to receiving CenterPiece you will also get a calendar of meetings, forums, courses, conferences, speakers, and so on. We hope that our improving the flow of information will prompt more of you to take advantage of the opportunities which Center membership offers.

This fall we will begin publishing a semiannual magazine of in-depth articles, reports, reviews, and analysis. The magazine will explore issues relevant to a deeper understanding and greater application of psychological process as it enhances our individual and collective capacities for social change. Each issue will focus on a particular theme, with articles from a variety of disciplines and backgrounds.

I encourage you to contribute your articles, listings, book reviews, photographs, and news to our new publications. Likewise, if you have ideas or comments, please drop us a line. Thank you for your continued support of the Center. I hope you enjoy CenterPiece and pass it on to a friend.

Vivienne Simon

A group of Center board members, staff, and friends met with John Seed last fall. People were excited and impressed with Seed's work and enthusiasm for life, and there was a great deal of mutual interest in future collaborative efforts. The comments below were taken from the video :

TO WAKE UP ONE DAY DIFFERENT

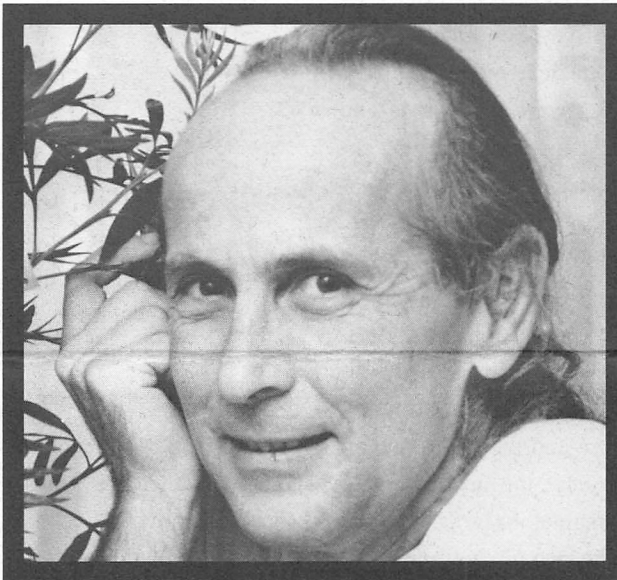
John Seed talks with Ram Dass

"When you look at the rate of global destruction, really nothing but a miracle would be of any use at this time. What kind of miracle would that be? Well, it would be for human beings to wake up one day different than they were the day before, realizing that this is the end unless we make some changes, and then deciding to make the change. Now that doesn't seem like a very likely thing to happen, but on the other hand the road we've traveled is so littered with miracles it's only our strange kind of modern psyche that refuses to see it!"

People must begin to feel the Earth's pain as they also experience the joy that comes from re-connecting with nature. Seed thinks this experience of joy will replace the false sense of happiness humans look to receive from material goods.

Deep ecology, Seed's field of expertise, promotes a biocentric view of the world, recognizing that human beings are only one of millions of life forms on the globe, part of a delicate balance of life. The current, human-centered paradigm, which places

human beings at the top of a hierarchy of life on the planet is the result of human insecurity, says Seed. This insecurity has led to the subsequent "puffing up of ourselves" as the planet's grandest species and has fueled behaviors which ignore and disrupt the Earth's equilibrium. Unless a biocentric view is embraced, global devastation will result. Seed challenges us to become truly alive and "wake up one day different."



Pictured above (photo courtesy of the Rainforest Information Centre) is John Seed, the founding director of Australia's Rainforest Information Centre, is a leading thinker in deep ecology. To order a copy of Seed's video, please contact the Center.

UPCOMING CENTER EVENTS

For more information on events listed below, please call the Center.

Workshop on Children's Political Psychology

Center researchers Petra Hesse (professor at Wheelock College) and Debra Poklemba-Anderson (teacher at Maynard Public Schools) will lead a day-long workshop this summer in children's political psychology. Their research on images of the enemy on television was featured in *The Boston Globe* on February 7, 1993. In the article Hesse and Poklemba-Anderson express concerns about the negative effects typical enemy images have on children. "Bad guys are frequently people of color, they have accents, and are Eastern European and have disabilities," said Poklemba-Anderson. Hesse added, "the only way to deal with enemies is by getting ready for war. So, in a way, it is a form of political indoctrination of 5-year-olds."

To address these concerns they developed a peace education curriculum to offer interventions before *the other* becomes *the enemy*.



ISPP to Convene in Cambridge

The International Society of Political Psychology will hold its annual conference July 6-10 at the Charles Hotel in Cambridge. The Center will play a major role with many of our affiliates presenting their work. Look for more information about these activities in the next issue of *CenterPiece* or call ISPP coordinator Michael Milburn, 495-8268.

Spring Forum: April 15th

At an evening forum, **Consumerism: Is it Destroying the Earth, Us, or Both?**, Harvard economist Juliet Schor, pictured below (photo by Suzanne Kreiter, courtesy of *The Boston Globe*), will speak on the consumption patterns of Americans, or, as she calls it, "the insidious cycle of work and spend." The author of *The Overworked American* believes this cycle is a "learned behavior" consuming our lives in addition to the planet.



Academic Council

The Academic Council, a monthly forum for presentations of works in progress, is open to all Center members and guests. It is held the second Thursday of every month, 12-2, Macht Auditorium. Any Center member or researcher may apply to present their work by contacting Andrea Levy-Waldstein, (508) 872-4813 or Bobby Cooley, 666-5424.



P
U
B
L
I
C

E
D
U
C
A
T
I
O
N

B U L L E T I N B O A R D

The projects we sponsor are an important means by which we accomplish our goal of psychosocial transformation. We accept applications for both in-house Center fellowships and sponsored research projects on an ongoing basis. To receive an application and guidelines contact Cynthia Goheen, program associate.

Welcome to Phyllis Eliasberg who recently joined the Center staff as the new development officer; she is an attorney and former consumer reporter for WNEV-TV, Boston. We also welcome Janet Barr, an intern working on the Center's Database Project (see p. 1). Janet is studying in a program at the University of Massachusetts at Boston entitled "Women in Politics and Government" and works as a career counselor. The Center extends a heartfelt thank-you to Kevin Mobley for his assistance in coordinating the Seventh Annual Recognition Award Event and for his invaluable help in the office.

The Center offered its psychological expertise on ethnic conflicts in a four-part series published by *The Boston Globe* December 13-16, 1992. In the series, "Roots of Ethnic Hatred," the Center's founding director John Mack and Center project director Joseph Montville stressed that a person's nationality has much psychological meaning in the definition of the self and must be taken into account when searching for solutions to ethnic conflict. They noted that the acknowledgment of one's own pain as well as the opposition's pain is essential to successful conflict resolution.

Sarah Conn, a Center board member, will travel to California for two weeks this summer to join with people from England, Germany, and the United States. The group will be trained by Joanna Macy to become leaders of her experiential work in deep ecology which she has developed over the past fourteen years.

"In the United States today children are exposed to more violence than ever before" write Center affiliates Nancy Carlsson-Paige and Diane Levin in a recent article, "Making Peace in Violent Times: A Constructivist Approach to Conflict Resolution" (*Young Children*, November 1992). The article addresses the increased violence in children's lives by outlining alternative approaches to conflict resolution.

Carlsson-Paige and Levin have also been on a staff of educators that has developed a five-day, elementary-based summer institute, *Alternatives to Violence: Creating Peaceable Urban School Communities*, in response to increasing violence in schools. This faculty will promote a comprehensive, community-based method for dealing with conflict. If you are an educator or a community worker and are interested in this institute, please contact Diane Levin at 724-5200.

As degradation of the Earth's biosphere confronts us daily, we must rethink how our ideas of the person includes connections to the nonhuman environment. What can the fields of psychology and ecology offer in this exploration?

Sarah Conn and Lane Conn have been working with Joanna Macy, Theodore Roszak, John Mack, and others at the Center to develop the field of ecopsychology. The Conns will present some of the principles and practices of the field in a talk to be given at the Massachusetts Psychological Association's meeting, "New Directions in Psychology," on March 27 at Wellesley College. For more details call the MPA, 523-6320.

Center Staff

Janet Barr
Database Project

Phyllis Eliasberg
Development Officer

Tom Friedman
Office Assistant

Cynthia Goheen
Program Associate

Jeana McNeil
Public Education Assistant

Scott Reischmann
Public Education Coordinator

Vivienne Simon
Executive Director

Paige Sorvillo
Office Assistant

Michelle Thresher
Administrative Assistant



CenterPiece is published by the Center for Psychology and Social Change, 1493 Cambridge St., Cambridge, MA, 02139, phone: (617) 497-1553. The Center for Psychology and Social Change is an affiliate of Harvard Medical School at Cambridge Hospital.